



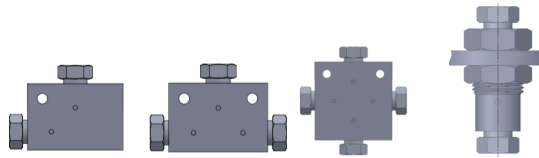
PRECISION HIGH PRESSURE

Fittings

Cone & Threaded Fittings

- MAWP up to 60,000 PSI (4140 bar)
- 316 cold worked stainless steel is standard
- Other materials available by request
- Safety weep holes standard on all connections
- Supplied complete with collars and glands when applicable
- Can be manufactured to meet NACE MR-01-75

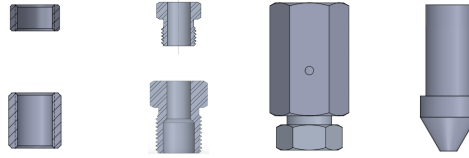
20,000 PSI (Medium Pressure)



Connection Size	MAWP (PSI)	Elbow	Tee	Cross	Bulkhead
1/4"	20,000	20L4MF	20T4MF	20X4MF	20BU4MF
3/8"	20,000	20L6MF	20T6MF	20X6MF	20BU6MF
9/16"	20,000	20L9MF	20T9MF	20X9MF	20BU9MF
3/4"	20,000	20L12MF	20T12MF	20X12MF	20BU12MF
1"	20,000	20L16MF	20T16MF	20X16MF	20BU16MF
1 1/2"	20,000	20L24MF	20T24MF	20X24MF	20BU24MF

PHP

PRECISION HIGH PRESSURE



Connection Size	Collar	Gland	Cap	Plug
1/4"	20CL4M	20GL4M	20CA4M	20PL4M
3/8"	20CL6M	20GL6M	20CA6M	20PL6M
9/16"	20CL9M	20GL9M	20CA9M	20PL9M
3/4"	20CL12M	20GL12M	20CA12M	20PL12M
1"	20CL16M	20GL16M	20CA16M	20PL16M
1 1/2"	20CL24M	20GL24M	20CA24M	20PL24M



Connection Size	MAWP (PSI)	Tube Nipple
1/4"	20,000	20N4M-*
3/8"	20,000	20N6M-*
9/16"	20,000	20N9M-*
3/4"	20,000	20N12M-*
1"	20,000	20N16M-*
1 1/2"	20,000	20N24M-*

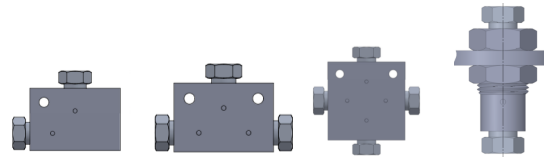
*Insert desired tube nipple length in inches

Example: 20N6M-4.00 is equal to 3/8" MP tube nipple, 4" length

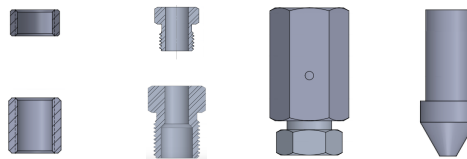


PRECISION HIGH PRESSURE

60,000 PSI (High Pressure)



Connection Size	MAWP (PSI)	Elbow	Tee	Cross	Bulkhead
1/4"	60,000	60L4HF	60T4HF	60X4HF	60BU4HF
3/8"	60,000	60L6HF	60T6HF	60X6HF	60BU6HF
9/16"	60,000	60L9HF	60T9HF	60X9HF	60BU9HF
1"	43,000	43L16HF	43T16HF	43X16HF	43BU16HF



Connection Size	Collar	Gland	Cap	Plug
1/4"	60CL4H	60GL4H	60CA4H	60PL4H
3/8"	60CL6H	60GL6H	60CA6H	60PL6H
9/16"	60CL9H	60GL9H	60CA9H	60PL9H
1"	43CL16H	43GL16H	43CA16H	43PL16H

PHP

PRECISION HIGH PRESSURE



Connection Size	MAWP (PSI)	Tube Nipple
1/4"	60,000	60N4H-*
3/8"	60,000	60N6H-*
9/16"	60,000	60N9H-*
1"	43,000	43N16H-*

*Insert desired tube nipple length in inches

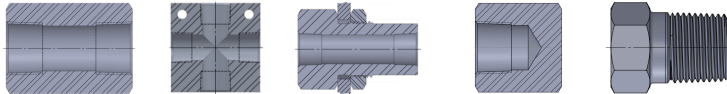
Example: 60N9H-6.00 is equal to 9/16" HP tube nipple, 6.00" length



PRECISION HIGH PRESSURE

Pipe Fittings

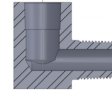
- NPT connections with MAWP up to 15,000 PSI (1030 bar)
- 316 cold worked stainless steel is standard
- Other materials available by request
- Can be manufactured to meet NACE MR-01-75



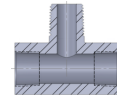
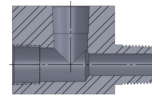
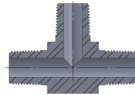
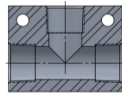
Connection Size	MAWP (PSI)	Coupling	Cross	Bulkhead	Cap	Plug
1/8"	15,000	15CU2NF	15X2NF	15BU2NF	15CA2NF	15PL2NM
1/4"	15,000	15CU4NF	15X4NF	15BU4NF	15CA4NF	15PL4NM
3/8"	15,000	15CU6NF	15X6NF	15BU6NF	15CA6NF	15PL6NM
1/2"	15,000	15CU8NF	15X8NF	15BU8NF	15CA8NF	15PL8NM
3/4"	10,000	10CU12NF	10X12NF	10BU12NF	10CA12NF	10PL12NM
1"	10,000	10CU16NF	10X16NF	10BU16NF	10CA16NF	10PL16NM

PHP

PRECISION HIGH PRESSURE



Connection Size	MAWP (PSI)	Female Elbow	Male Elbow	Street Elbow
1/8"	15,000	15L2NF	15L2NM	15L2NM2NF
1/4"	15,000	15L4NF	15L4NM	15L4NM4NF
3/8"	15,000	15L6NF	15L6NM	15L6NM6NF
1/2"	15,000	15L8NF	15L8NM	15L8NM8NF
3/4"	10,000	10L12NF	10L12NM	10L12NM12NF
1"	10,000	10L16NF	10L16NM	10L16NM16NF



Connection Size	MAWP (PSI)	Female Tee	Male Tee	Male Run Tee	Male Branch Tee
1/8"	15,000	15T2NF	15T2NM	15T2NF2NM2NF	15T2NF2NF2NM
1/4"	15,000	15T4NF	15T4NM	15T4NF4NM4NF	15T4NF4NF4NM
3/8"	15,000	15T6NF	15T6NM	15T6NF6NM6NF	15T6NF6NF6NM
1/2"	15,000	15T8NF	15T8NM	15T8NF8NM8NF	15T8NF8NF8NM
3/4"	10,000	10T12NF	10T12NM	10T12NF12NM12NF	10T12NF12NF12NM
1"	10,000	10T16NF	10T16NM	10T12NF12NM12NF	10T16NF16NF16NM